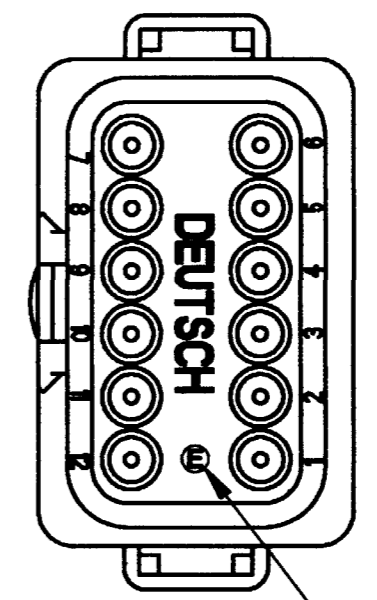
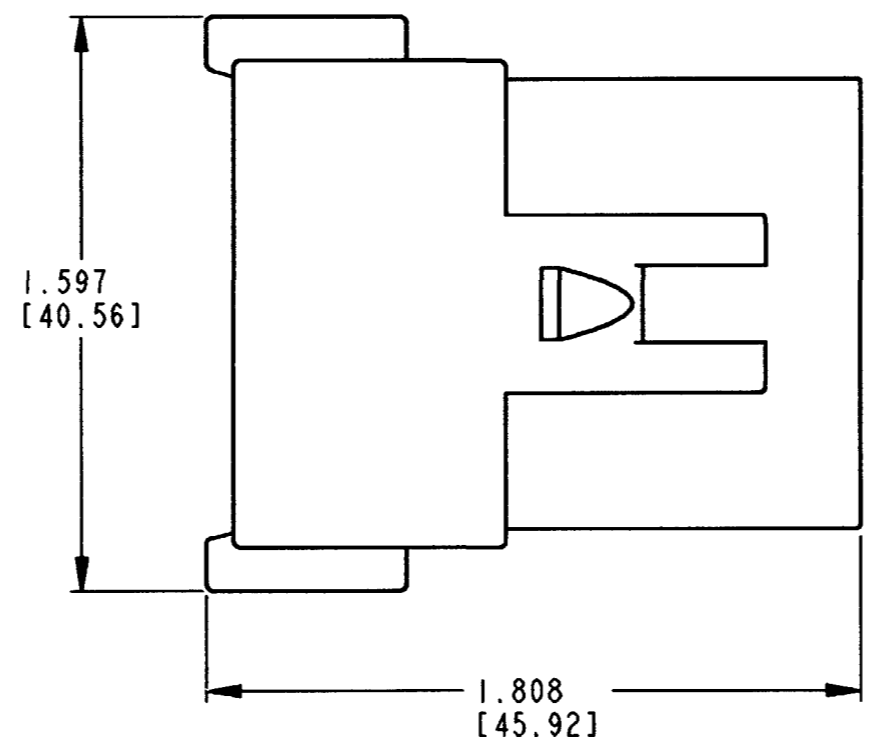
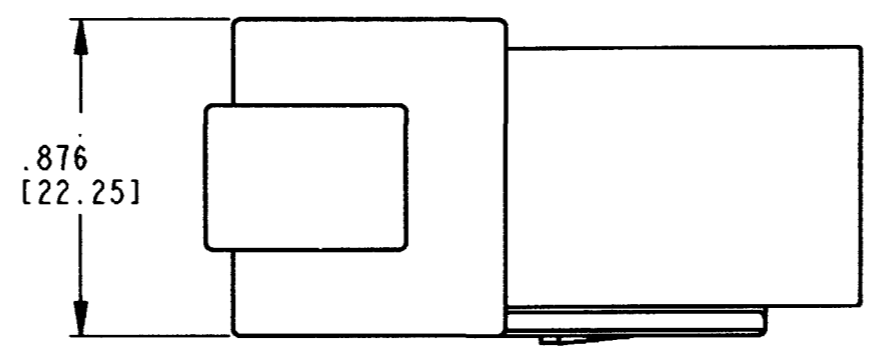
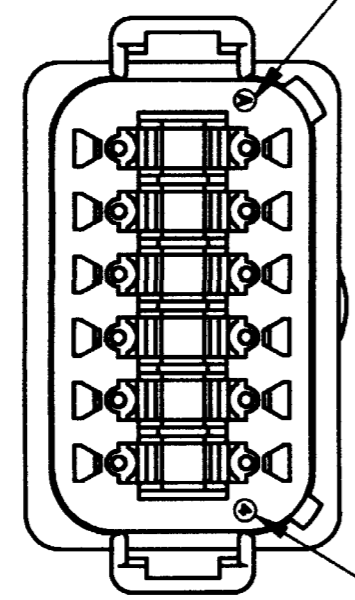


REV  
NC DT04-12P\*-C015

REVISIONS			
SYM	DESCRIPTION	DATE	APPROVED
NC	NEW RELEASE/REPLACES PREVIOUS RELEASE PER E.O. P18766	2-21-05	RD



DATE CODE: MONTH IS REPRESENTED BY SEQUENTIAL ALPHA CHARACTERS.  
EX. A = JANUARY



DATE CODE: YEAR IS REPRESENTED BY LAST NUMERICAL DIGIT.  
EX: 4 = 2004

-E- SYMBOL DESIGNATES REDUCED WIRE SEAL

CONTACT SIZE	MIN. INSUL O.D.	MAX. INSUL O.D.	WIRE RANGE [mm <sup>2</sup> ]
16	.053 [1.35]	.120 [3.05]	14-20 AWG [2.0-0.5]

4. THIS RECEPTACLE MATES WITH THE DT06-12S\*-\*\*\*\* PLUG (\*\*\*\* = ALL MODIFICATIONS). CONSULT FACTORY FOR MODIFICATIONS.

3. FOR CONTACTS AND WIRE PERFORMANCE AND APPLICATION CHARACTERISTICS SEE ENVELOPE DRAWING 0425-015-0000 AND 0425-017-0000.

2. DIMENSIONS ARE ±.025 [ .64] UNLESS OTHERWISE SPECIFIED.

1. DIMENSIONS ARE IN INCHES [MILLIMETERS].  
NOTES:

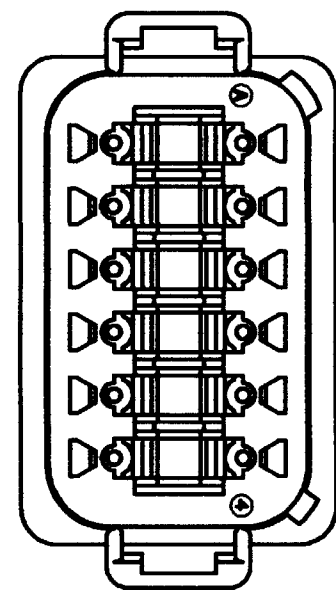
SIGNATURE & DATE	
DR	X. SANCHEZ 04FEB05
CHK	R. M... 2/18/05
PE	[Signature]
APPD	S. Bend 2-15-05
SCALE	NONE
WT	

12 WAY RECEPTACLE  
-C015 MOD.  
D.T. SERIES  
  
ENVELOPE

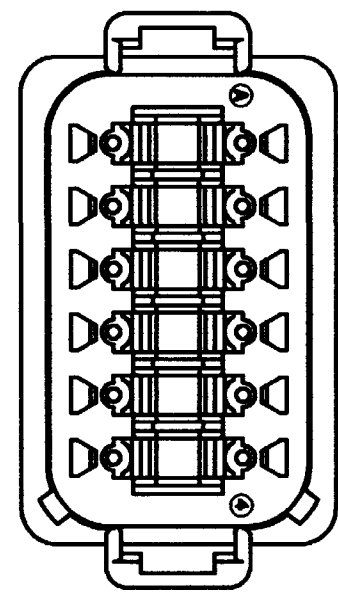
CP	MATL. CODE
<b>The Deutsch Company</b> DEUTSCH I.P.D. 3850 INDUSTRIAL AVE. HEMET, CALIF. 92545	
<b>B</b>	<b>DT04-12P*-C015</b>
DWG SIZE	CODE 11139 SHEET 1 OF 2

REV NC	DT04-12P*-C015	REVISIONS		
SYM	DESCRIPTION	DATE	APPROVED	
NC	NEW RELEASE/REPLACES PREVIOUS RELEASE PER E.O. P18766			
		2-21-05	RDR	

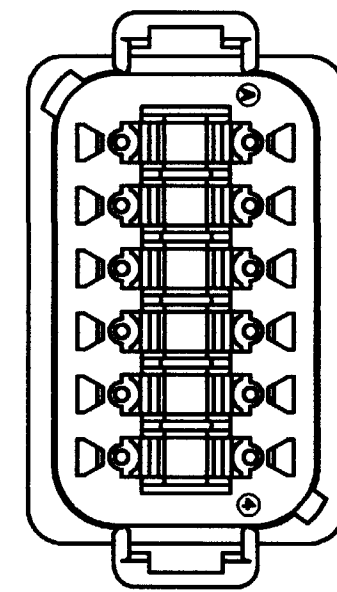
PART NO.  
DT04-12PA-C015  
KEY ARR. -A-  
COLOR: GRAY



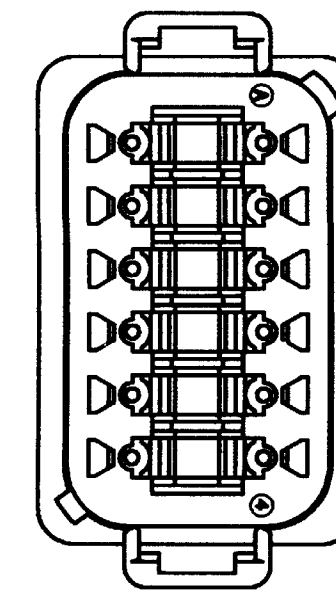
PART NO.  
DT04-12PB-C015  
KEY ARR. -B-  
COLOR: BLACK



PART NO.  
DT04-12PC-C015  
KEY ARR. -C-  
COLOR: GREEN



PART NO.  
DT04-12PD-C015  
KEY ARR. -D-  
COLOR: BROWN



NOTES:

SIGNATURE & DATE		12 WAY RECEPTACLE -C015 MOD. D.T. SERIES	CP	MATL. CODE
DR	X. SANCHEZ 04FEB05		The Deutsch Company	
CHK	R. Morgan 2/16/05		DEUTSCH I. P. D. 3850 INDUSTRIAL AVE. HEMET, CALIF. 92545	
PE	John Johnson 2/16/05		<b>B</b>	DT04-12P*-C015
APPD	S. Bland 2-15-05		DWG SIZE	CODE 11139
SCALE	NONE	WT	SHEET 2 OF 2	

ENVELOPE